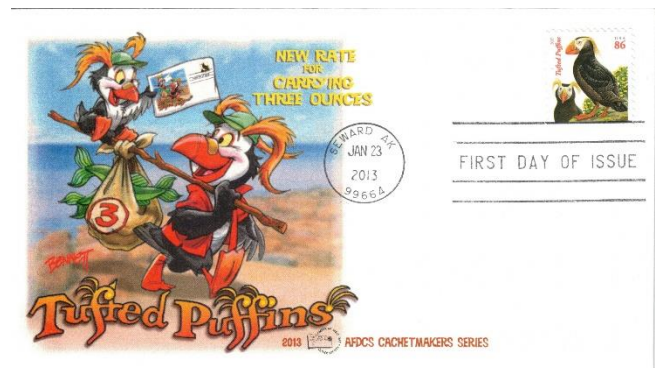
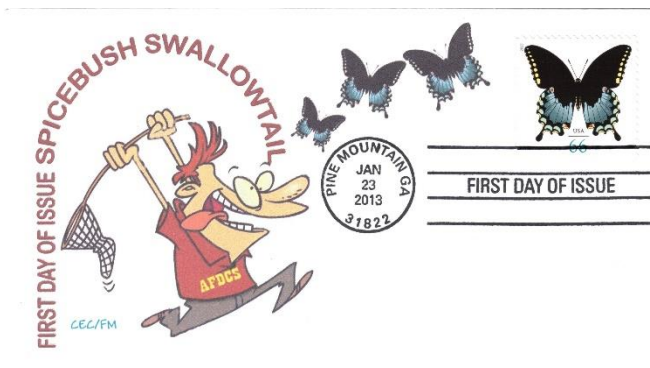


86c Tufted Puffins

Stamp of 2013

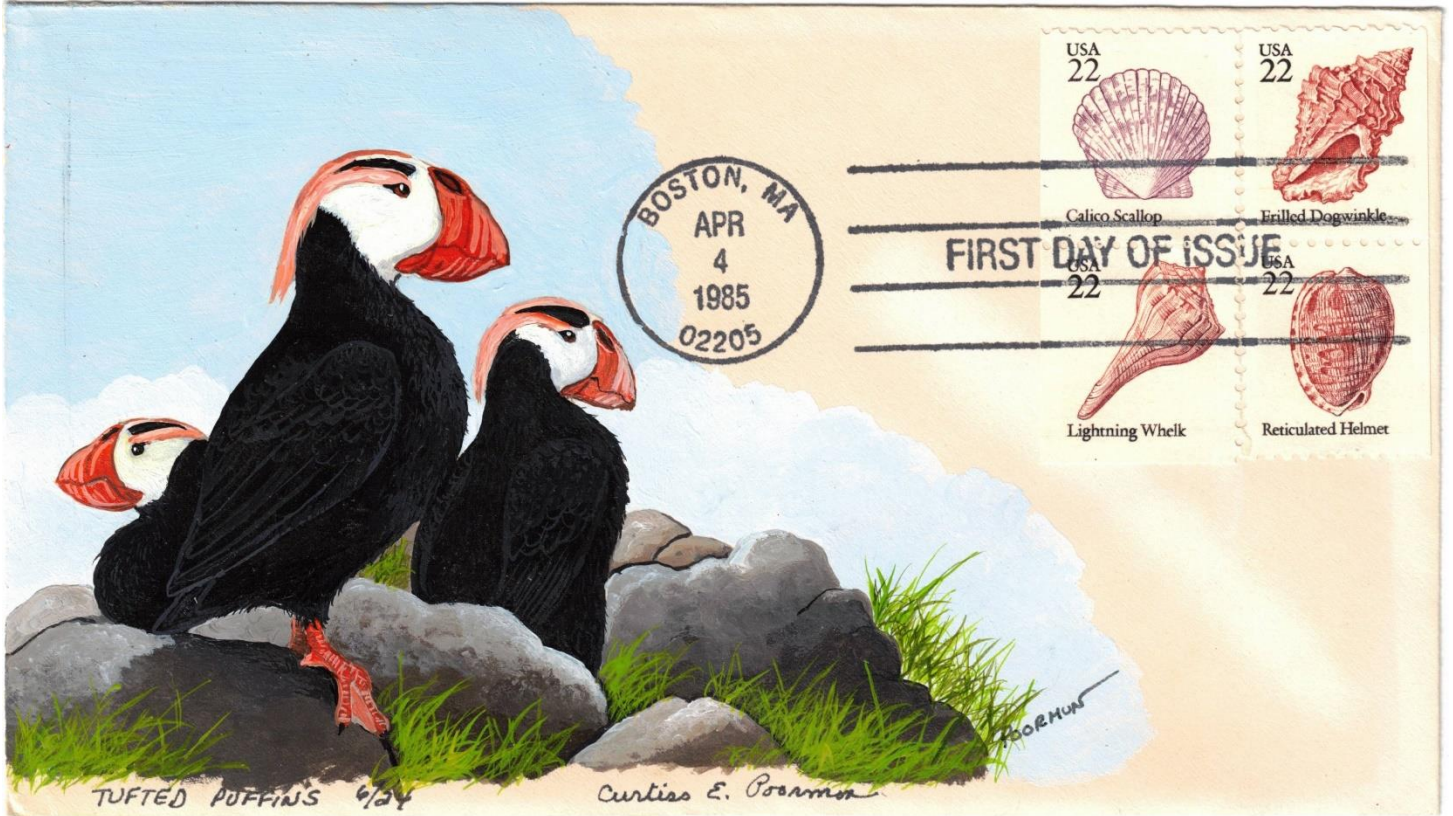
3 ounce rate



-Issued on January 23, 2013 in Seward, Alaska

-Pays the up to 3 ounce rate

-Tufted Puffins. Found along the Pacific coast from Oregon to Alaska, this unmistakable bird is named for the striking tufts of long, yellow feathers that grow from the sides of its head during breeding season. The stamp art features a colorful painting of two tufted puffins by Robert Giusti. Art director Derry Noyes designed the stamp.



Curtis Poorman-Puffin cachet for Sc 2117-2121

-There are seven philatelic products available for this stamp issue:

115006, Press Sheet with die cuts, \$103.20 (Print Quantity of 2,500).

115008, Press Sheet without die cuts, \$103.20 (Print Quantity of 2,500).

115010*, Keepsake (Pane & Digital Postmark Set), \$19.95.

115016*, First Day Cover, \$1.30.

115021*, FDC w/ Digital Color Postmark, \$2.01.

115031*, Stamp Deck Card, \$0.95.

115032*, Stamp Deck Card w/Digital Color Postmark, \$2.36.

-Technical Specifications:

Issue: Tufted Puffins

Item Number: 115000

Denomination & Type of Issue: 86-cent Definitive

Format: Pane of 20 (1 design)

Series: N/A

Issue Date & City: January 23, 2013, Seward, AK 99664

Designer: Derry Noyes, Washington, DC

Art Director: Derry Noyes, Washington, DC

Typographer: Derry Noyes, Washington, DC

Artist: Robert Giusti, Bridgewater, CT

Modeler: Joseph Sheeran

Manufacturing Process: Offset/Microprint "USPS"

Engraver: N/A

Printer: Ashton Potter (USA) Ltd. (APU)

Printed at: Williamsville, NY

-Technical Specifications (cont'd):

Press Type: Stevens, Vari-Size Security Press

Stamps per Pane: 20

Print Quantity: 30 million stamps

Paper Type: Prephosphored, Type II

Adhesive Type: Pressure-sensitive

Processed at: Ashton Potter (USA) Ltd. (APU)

Stamp Orientation: Vertical

Image Area (w x h): .73 x .84 in./18.54 x 21.34 mm

Overall Size (w x h): .87 x .98 in./22.10 x 24.89 mm

Full Pane Size (w x h): 5.35 x 4.93 in./135.89 x 125.22 mm

Colors: Black, Cyan, Magenta, Yellow, PMS 7417 (Orange

Plate Size: 240 stamps per revolution

Plate Numbers: N/A

Marginal Markings:

Front: Plate numbers in four corners of pane

Back: "© 2012 USPS • USPS logo • Plate position diagram • Barcode (115000) at top right and bottom left corner of pane • Promotional text

-Reprinted with plate number P2222, year date “2013” in black instead of orange red and with dots (instead of solid color) in “Tufted Puffins” and “86.”

-Scott Number 4737 for initial printing and 4737A the P2222 reprint; 4737b for the imperforate (NDC).

-Replaced the 2011 84c Oveta Culp Hobby stamp, Scott 4510.

-Printed in sheets of 120 (6 panes of 20 stamps per sheet).



Imperf (NDC) Cross Gutter Block of 4

-Both die cut and NDC sheets were sold to collectors.

Puffin FDCs

AFDCS Cachetmaker Series (D. Bennett)

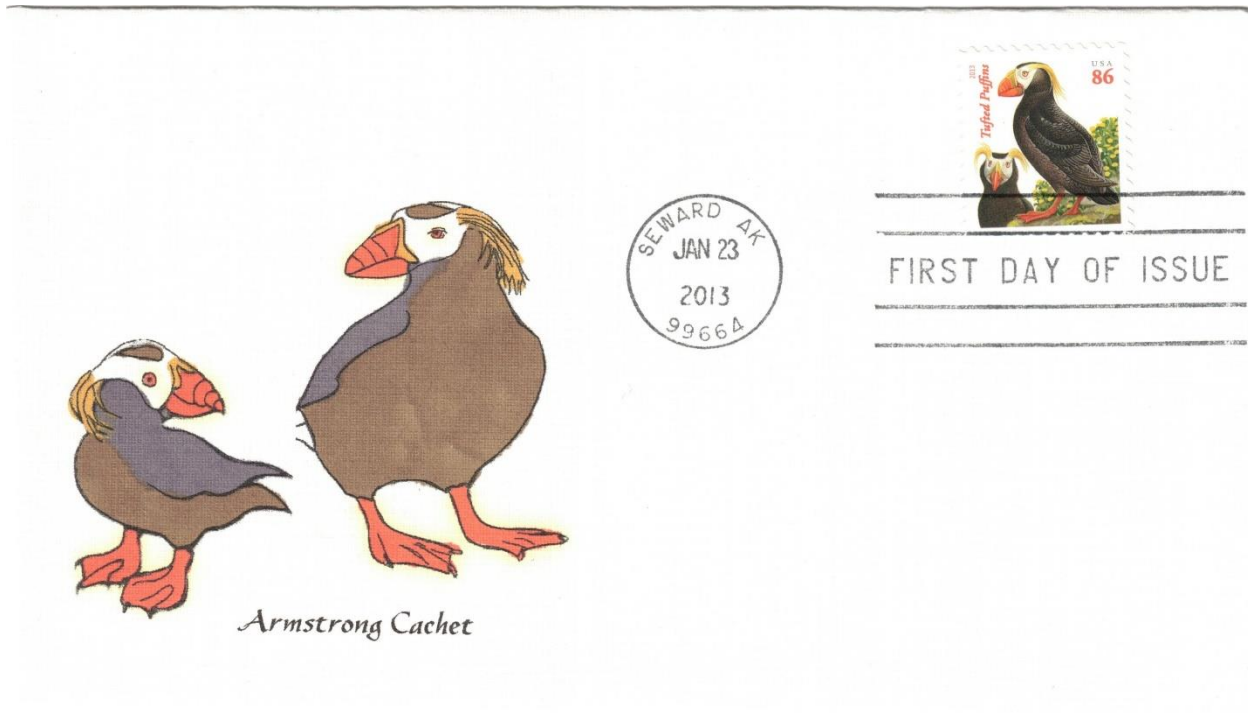


FIRST DAY OF ISSUE

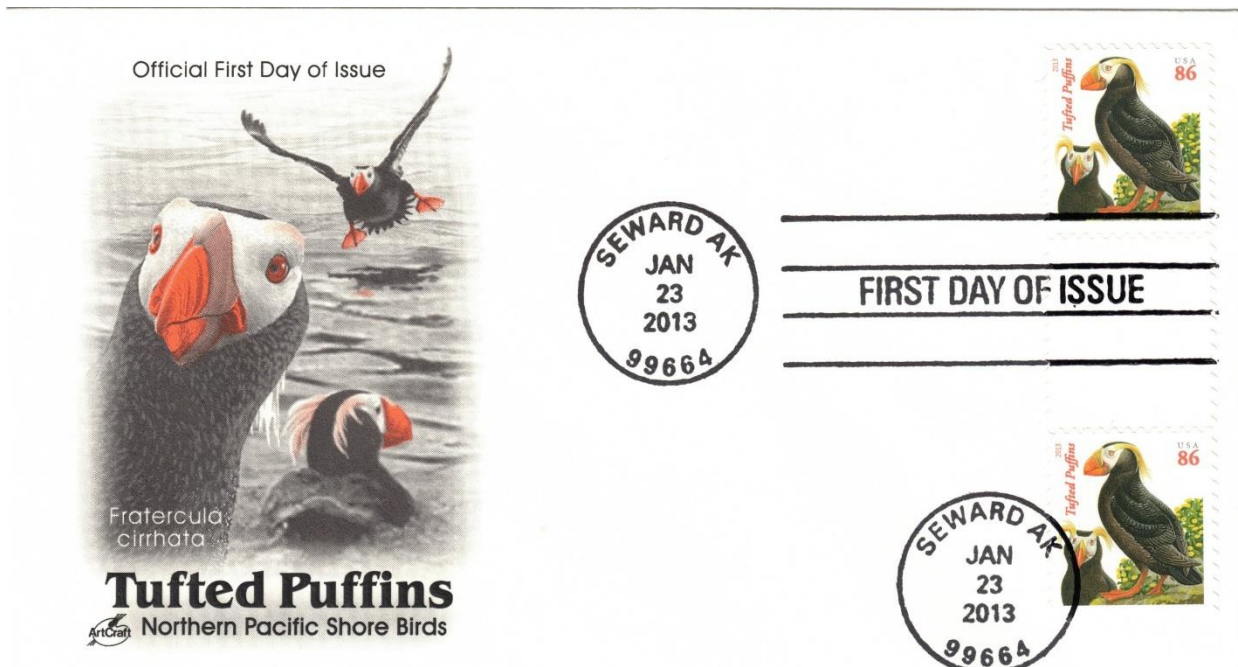
Anderson Historical Covers (reused C70 FDC)



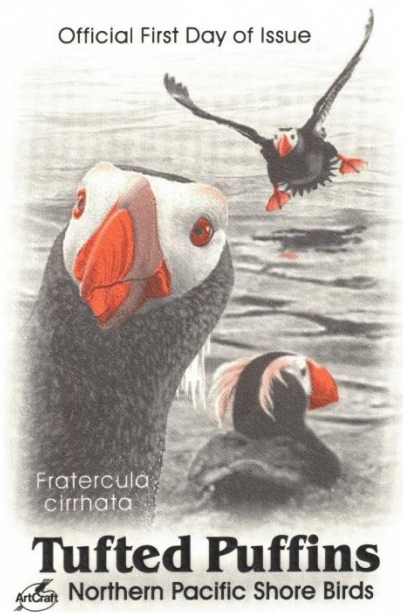
Armstrong Cachet (Kelly Armstrong)



Artcraft – vertical pair w/ horizontal gutter



Artcraft - horiz. imperf pair

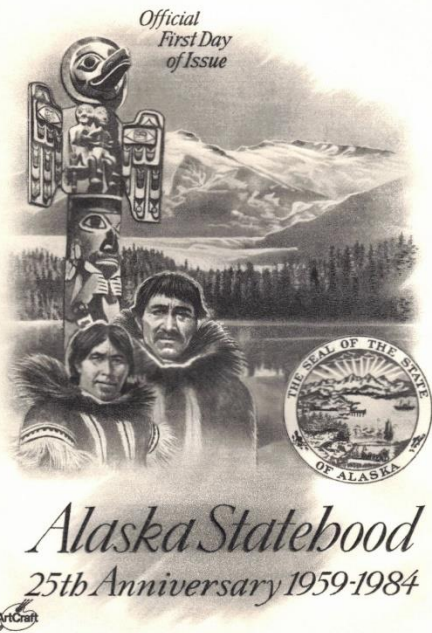


January 23, 2013
Seward, AK 99664

tufted
PUFFINS

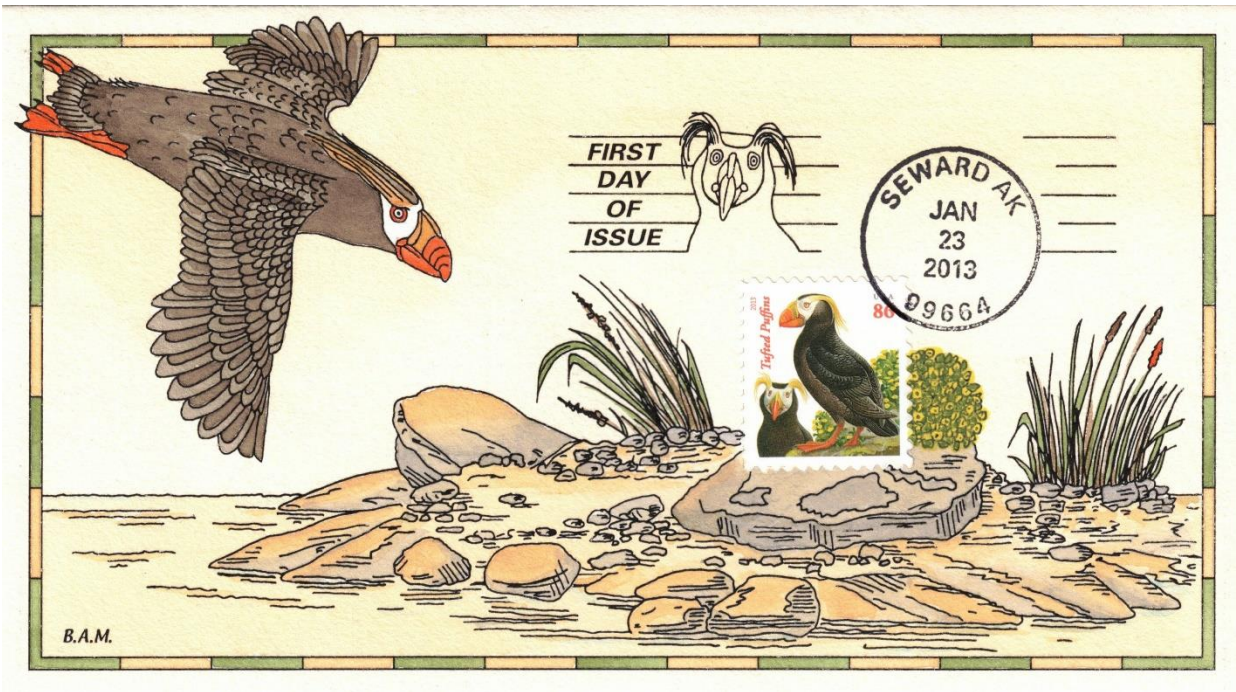


Artcraft (reused 2066 FDC)



FIRST DAY OF ISSUE

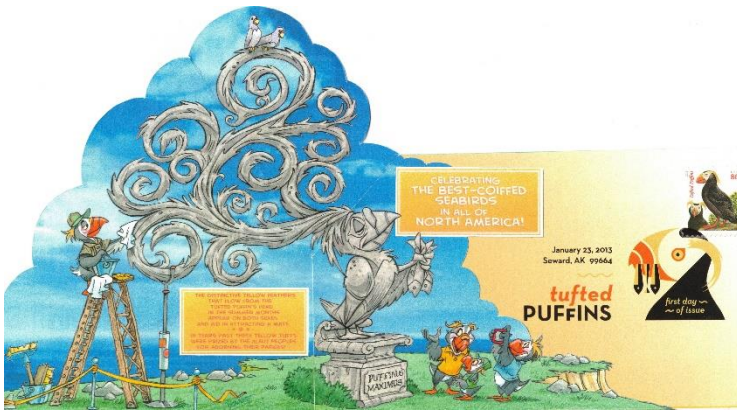
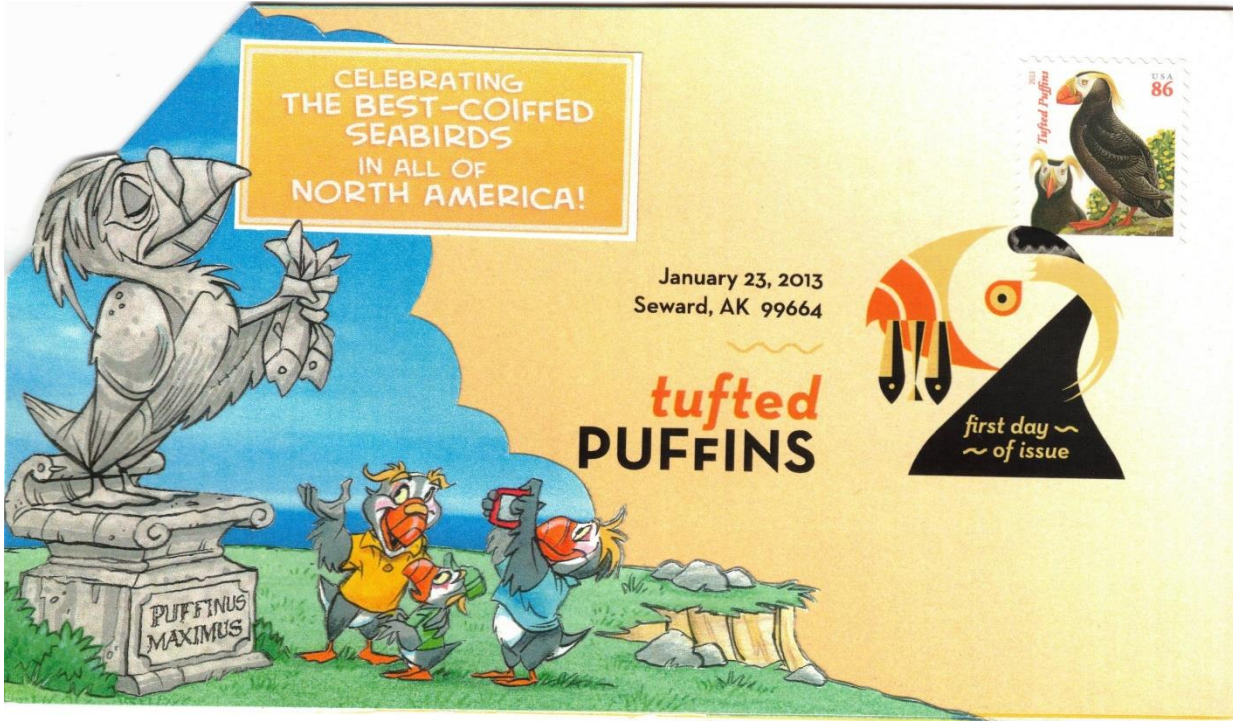
B.A.M. (Montgomery, Barbara)-HP (grn/yell border)



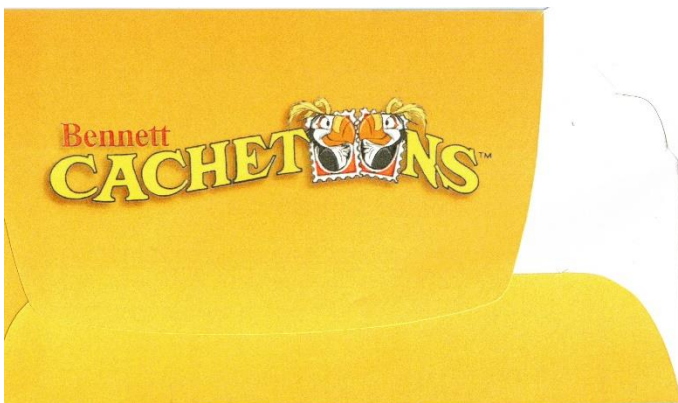
B.A.M. (Montgomery, Barbara)-Artist Proof-HP (blu/gold border)



Bennett Cachetons-Handmade env.

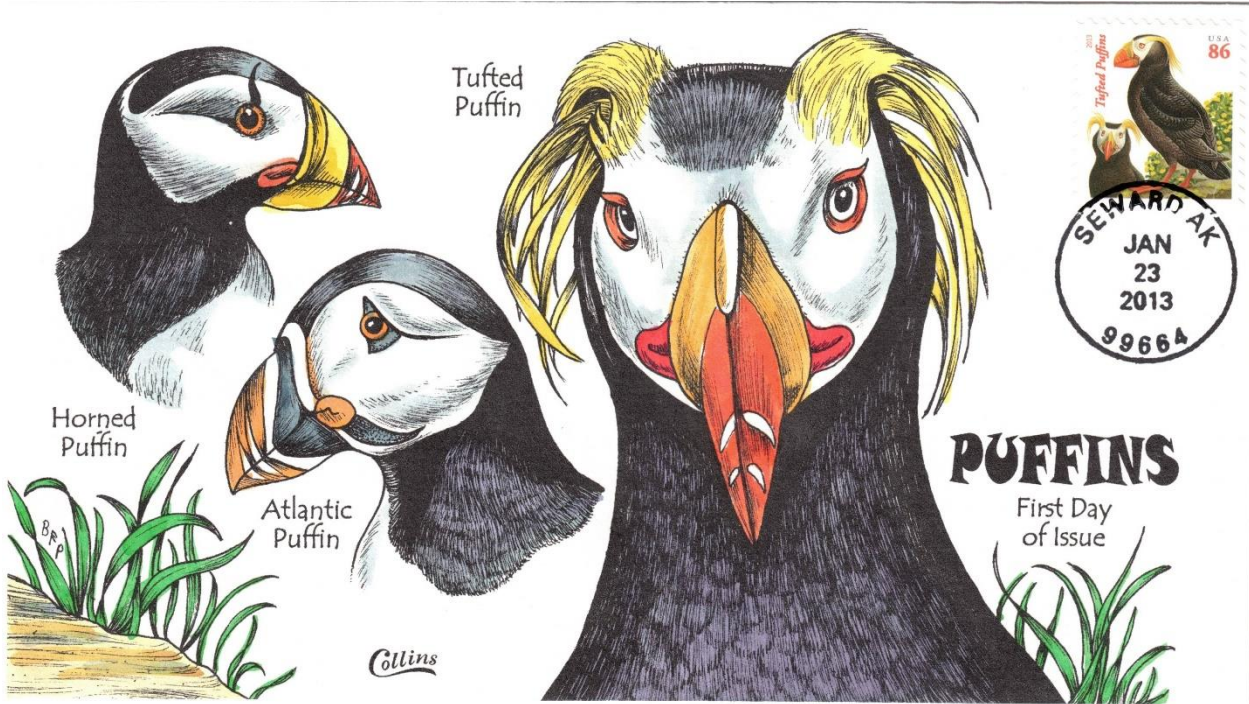


fully opened

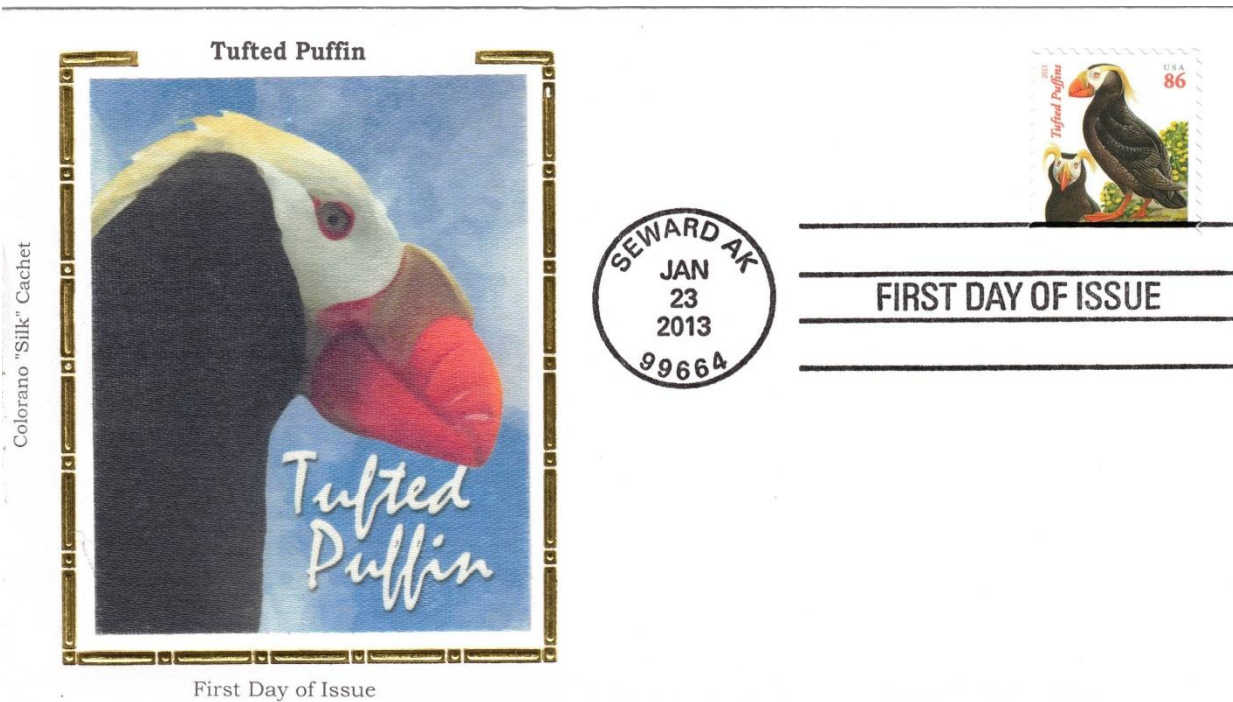


reverse

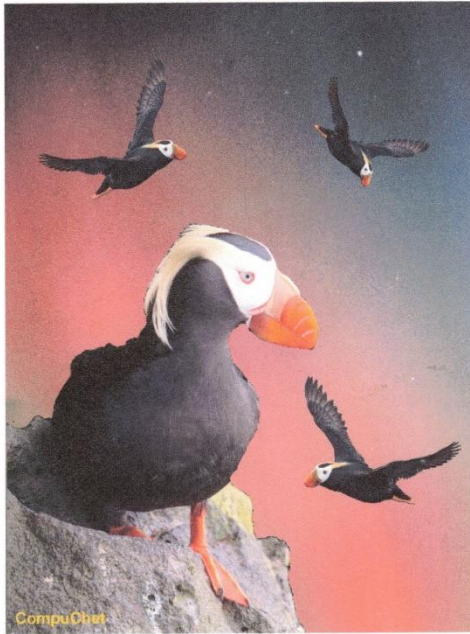
Collins-HP



Colorano Silk



Compuchet Cachet (Helen and Fred Fowler)



January 23, 2013
Seward, AK 99664

tufted
PUFFINS



Curtis, Dave-Design A



100%

28/30



FIRST DAY OF ISSUE

Curtis, Dave-Design B



100%

10/10

January 23, 2013
Seward, AK 99664

tufted
PUFFINS



first day ~
~ of issue

Curtis, Sabrina-Design A



Sabrina Curtis 12/25



Curtis, Sabrina-Design B



Sabrina Curtis 23/25

January 23, 2013
Seward, AK 99664

tufted
PUFFINS



Dragon Cards



January 23, 2013
Seward, AK 99664

tufted
PUFFINS



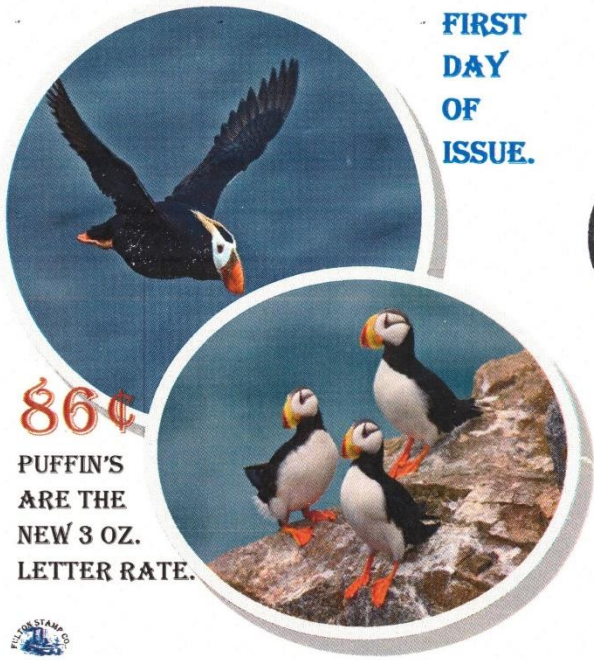
Fisher, Mary - HP



Fleetwood-Imperf. Horz. Gutter Pair



Fulton Stamp Co. (Ron Traino)



FIRST
DAY
OF
ISSUE.



FLG Cachets (Frans Geerlings) – HP



GreatFDCs (Jack Ginsburg)-Design A

Tufted Puffin



During the winter feeding season, the tufts molt off and the plumage, beak and legs lose much of their luster.



FIRST DAY OF ISSUE

GreatFDCs (Jack Ginsburg)-Design B

Tufted Puffin



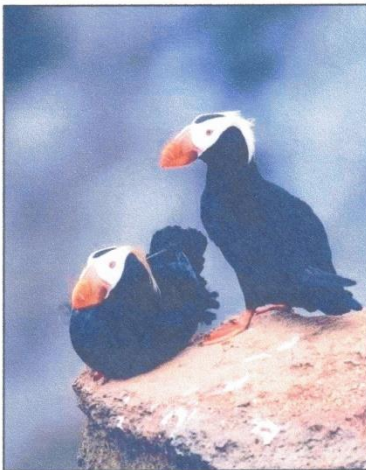
The Tufted Puffin is found throughout the North Pacific Ocean.



FIRST DAY OF ISSUE

GreatFDCs (Jack Ginsburg)-Design C

Tufted Puffin



January 23, 2013
Seward, AK 99664

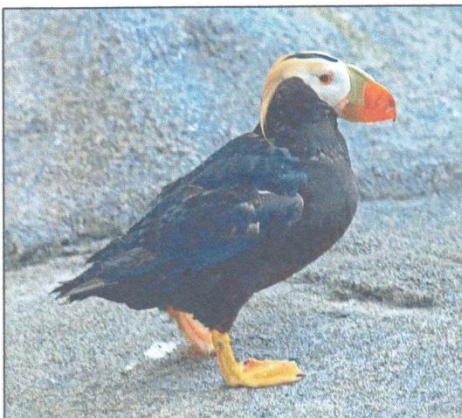
tufted
PUFFINS



Tufted Puffins are mostly black with a white facial patch. They have a very thick bill which is mostly red. As the summer reproductive season approaches, birds of both sexes grow yellow tufts.

GreatFDCs (Jack Ginsburg)-Design D

Tufted Puffin

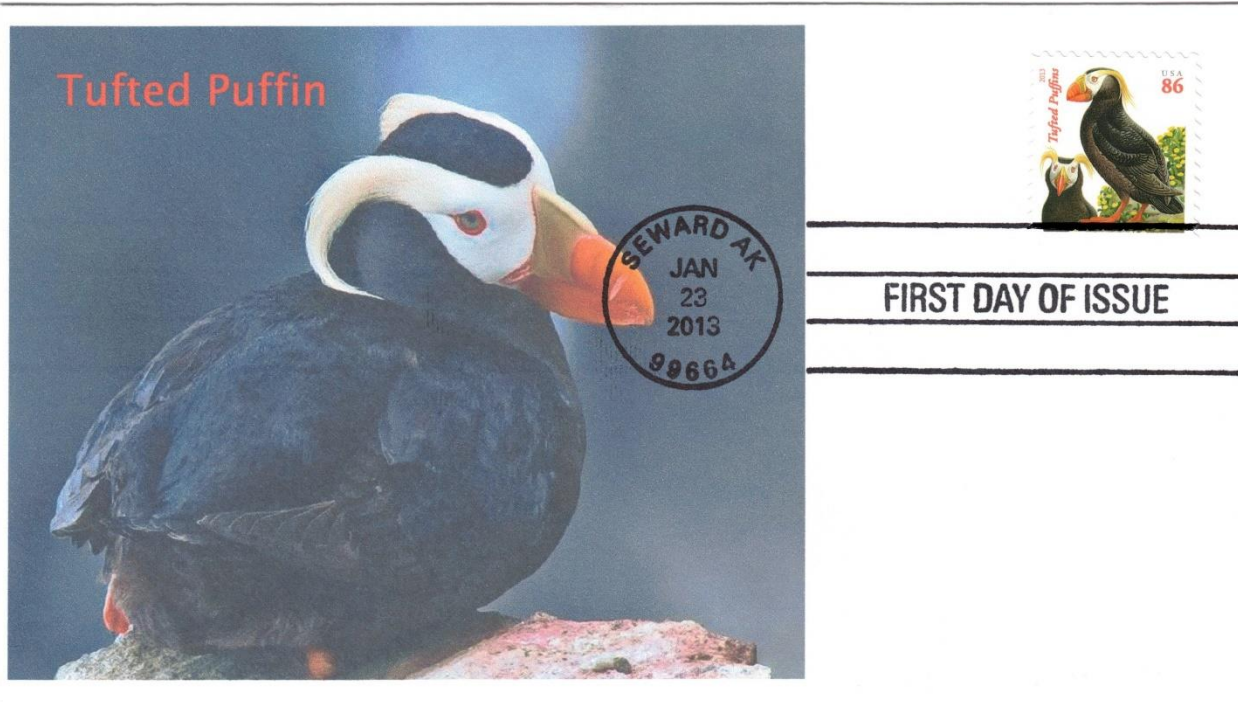


FIRST DAY OF ISSUE



In the summer, the feet of Tufted Puffins become bright red and their faces become bright white.

GreatFDCs (Jack Ginsburg)-Design E



Great FDCs (serviced Zazzle postcard)



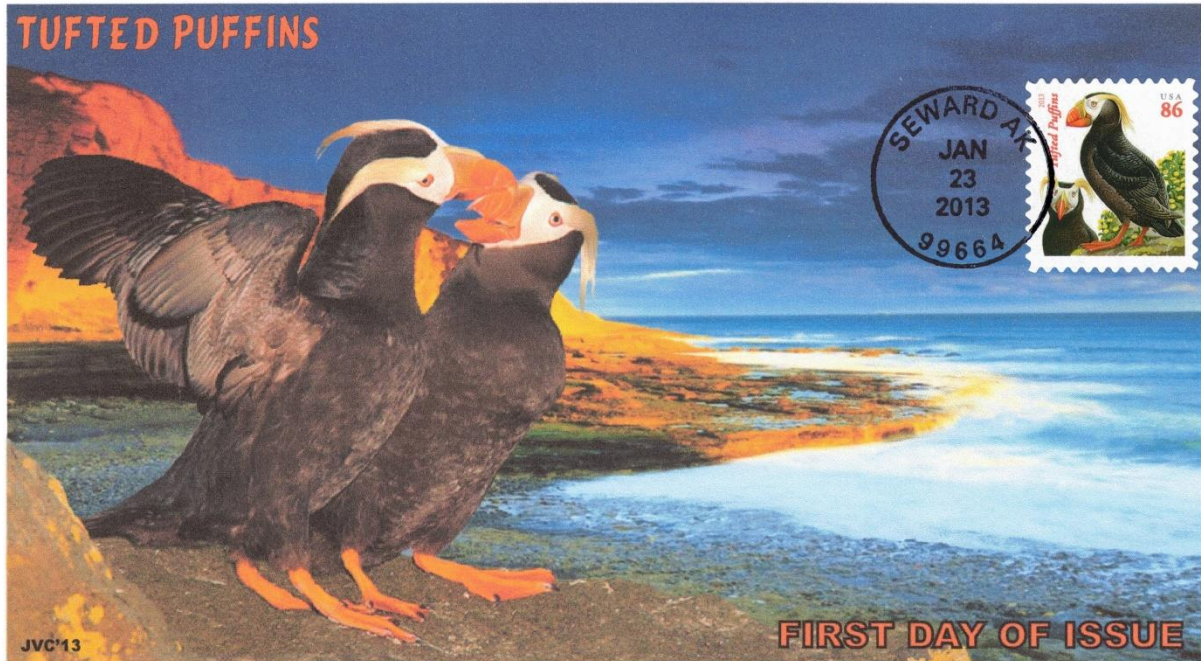
Hobby Link Limited Edition (Kevin Tracy)-Type 1



Hobby Link Limited Edition (Kevin Tracy)-Type 2



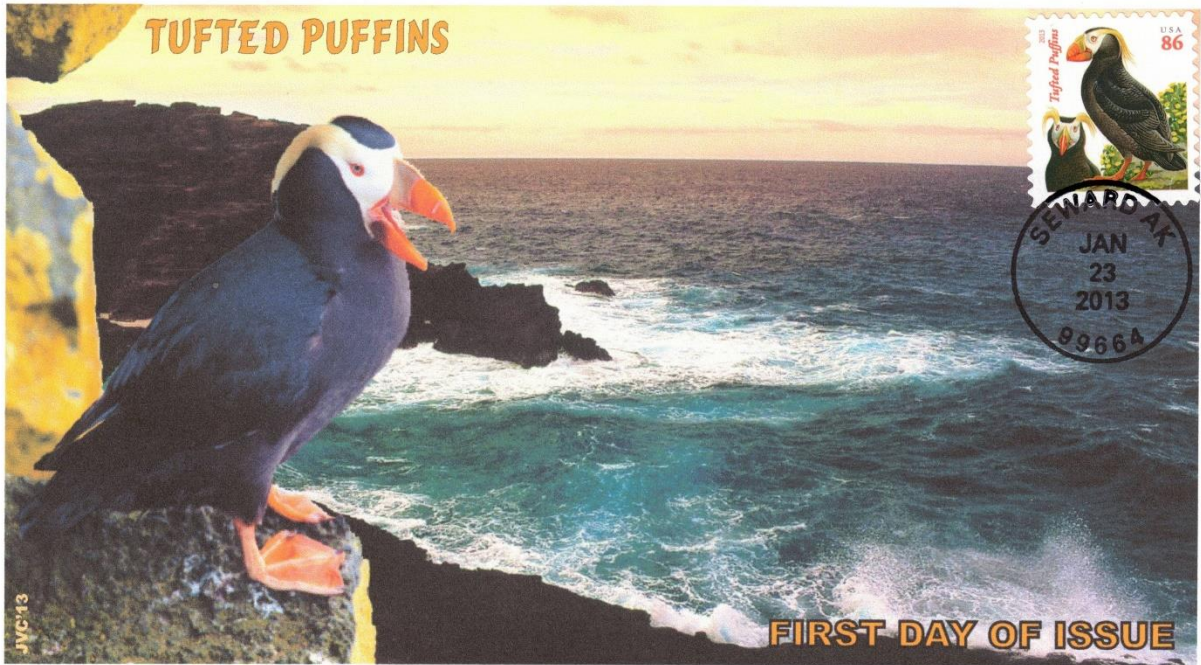
JVC Cachets-Type 1



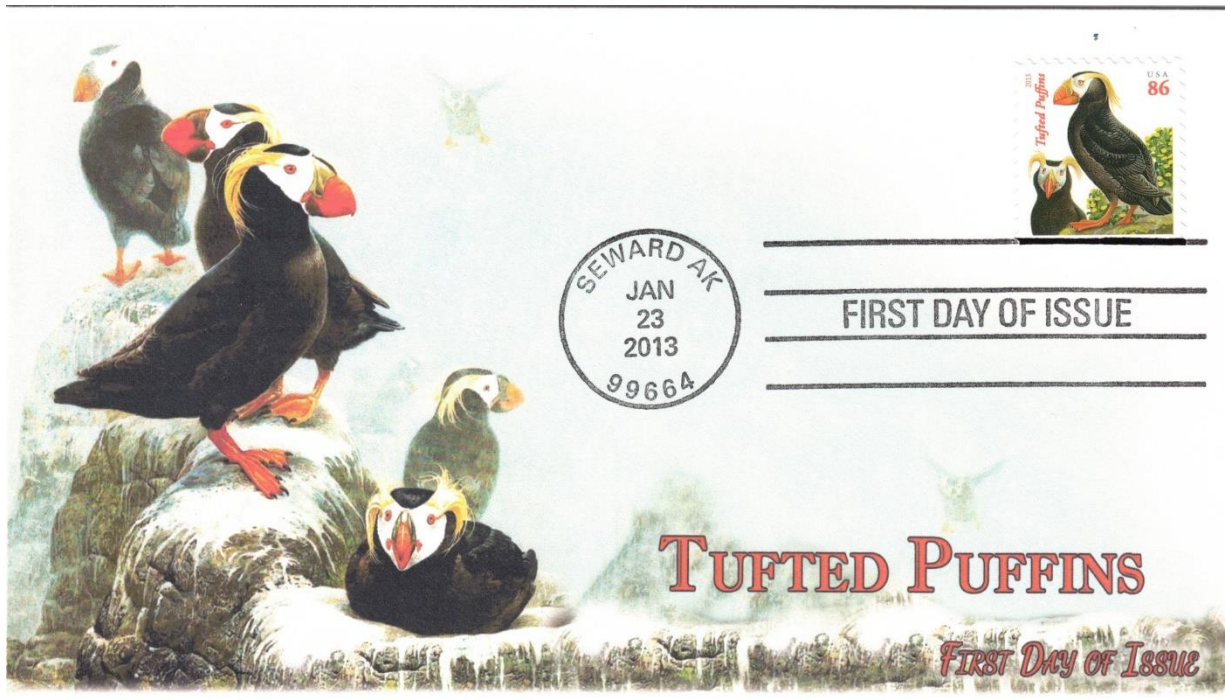
JVC Cachets-Type 2



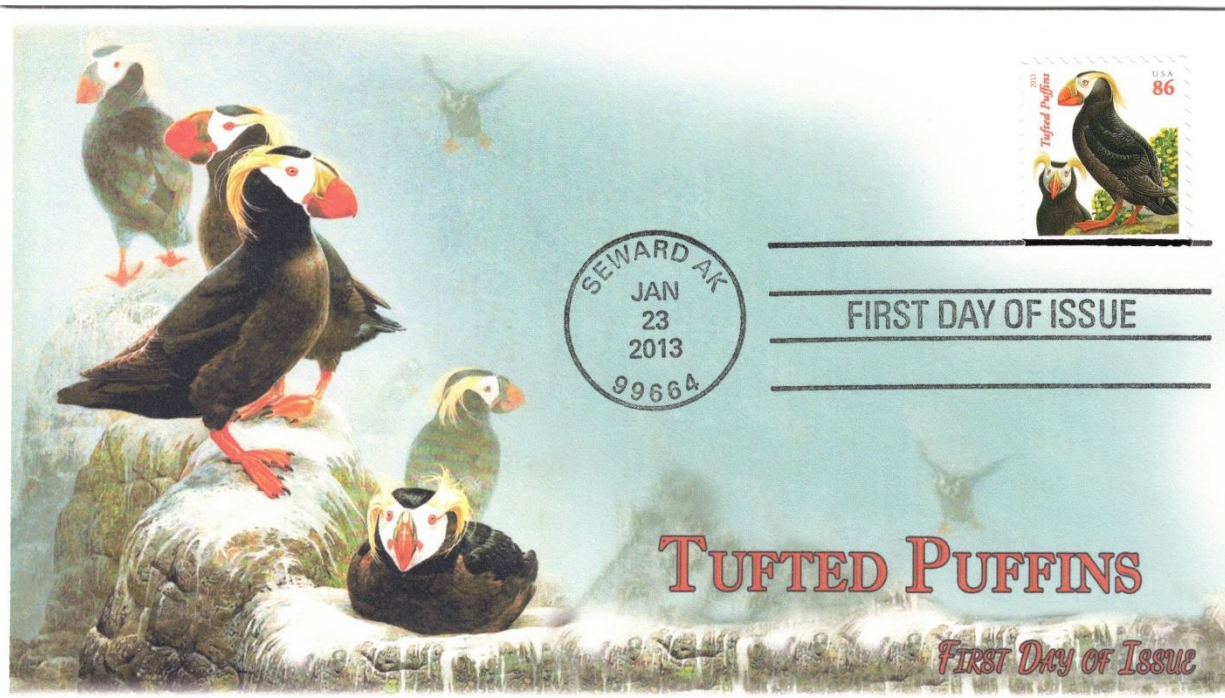
JVC Cachets-Type 3



KSC Cachets (Kevin Colton)-Add on 2021



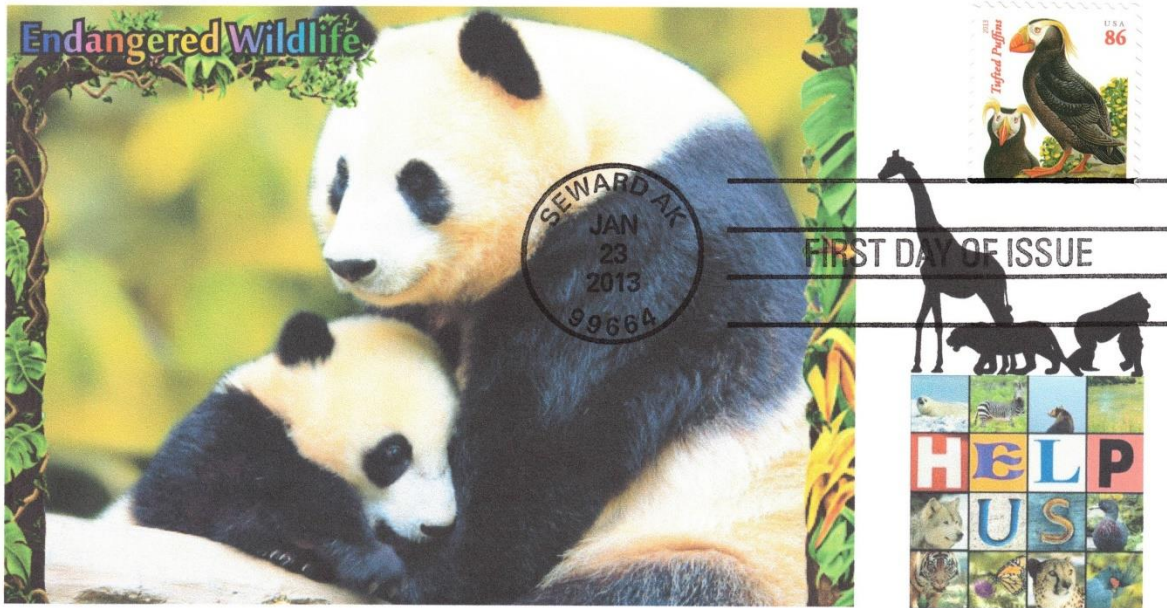
KSC Cachets (Kevin Colton)-Add on 2022



Murray, Steve-Eagle #03



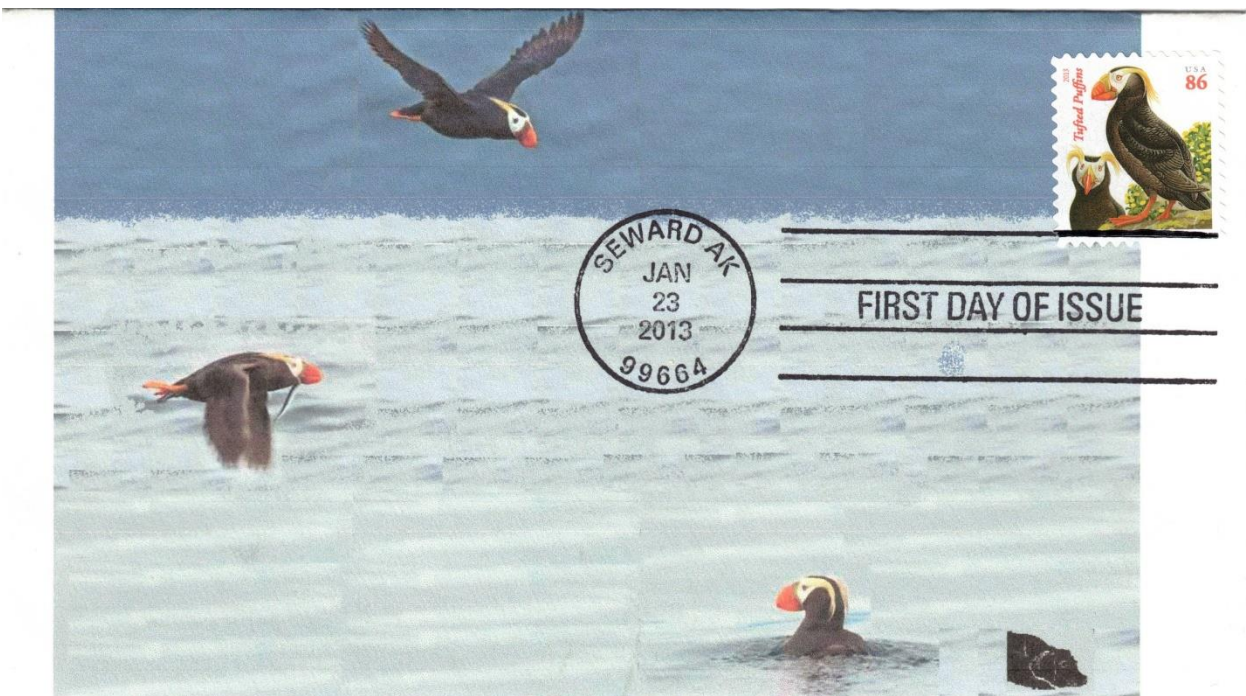
Murray, Steve-Panda and Cub #04



National Wildlife Federation birthday card
(serviced by Frank Kohut) [open the card and it actually
says "Happy Birthday"]



Onedog Cachets



Panda Cachets



Known as the "parrot of the sea" for its bright colors, it nests in burrows or tunnels on inaccessible rocky cliffs to avoid predators. While social during nesting they are solitary after the breeding season. Its beak is specialized to hold many fish per trip. Its range is the Central North Pacific from the Bering Strait to California.

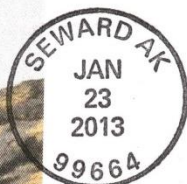
Panda Cachets

January 23, 2013
Seward, AK 99664

tufted
PUFFINS



PoppyGun Cachets-Design A



FIRST DAY OF ISSUE

The Tufted Puffin also known as Crested Puffin, is a relatively abundant medium-sized pelagic seabird in the auk (Alcidae) family found throughout the North Pacific Ocean. It is one of three species of puffin that make up the *Fratercula* genus and is easily recognizable by its thick red bill and yellow tufts.

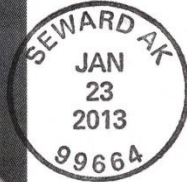
PoppyGun Cachets-Design B



FIRST DAY OF ISSUE

The Tufted Puffin is a seabird of the open waters, islands, and coastal cliffs of the north Pacific. It is larger than other puffin species and distinctive in appearance, with a bold white "face-mask" and golden head plumes in the breeding season.

PoppyGun Cachets-Design C



FIRST DAY OF ISSUE

Tufted Puffins are medium-sized, stocky seabirds with rounded heads. They are solid brown-black overall, except for distinctive facial coloration. The outer wings are wider than the inner wings, giving the outstretched wing a hand-like appearance. The feet and bill are orange. In breeding plumage, a Tufted Puffin has a white mask across its face, ending in a tuft of blonde feathers sweeping back from above the ear. The orange beak is very bright and accented with yellow at the base. It can be distinguished from other puffins by its dark belly.

PoppyGun Cachets-Design D



FIRST DAY OF ISSUE

The Tufted Puffin is a medium-sized, stocky, dark seabird with a rounded head. The breeding adult is all black except for a white face and long golden plumes curling over back of head and neck. The thick bill is large and red-orange, with a bright-orange yellow plate over the base. The nonbreeding adult has a dark gray face with no head plumes or bill plate. The large webbed feet are orange. The eye is ringed with orange. Males and females look alike, but males are usually slightly larger than females. Tufted Puffins are the size of pigeons, but weigh nearly twice as much (2 lbs).

PoppyGun Cachets-Design E

Size difference between the 3 types of puffins

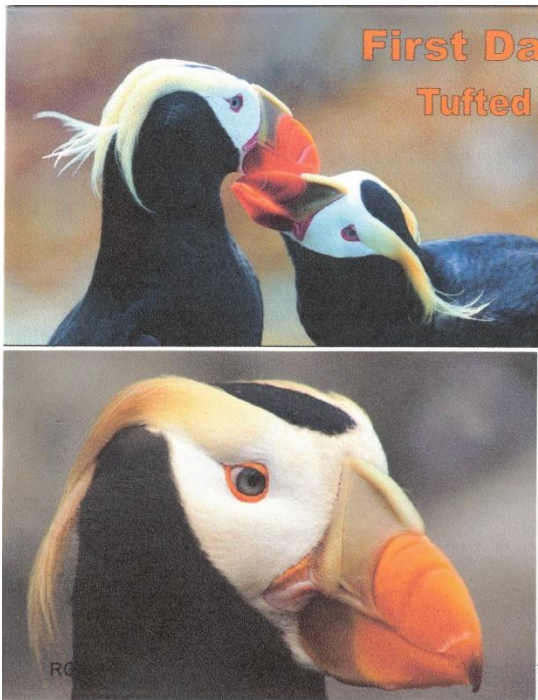
This is a relational size - not actual size



FIRST DAY OF ISSUE

Its bright colors have earned the tufted puffin the nickname, "parrot of the sea," but this beautiful bird is at home on land as well. In early spring, its beak and feet turn a vibrant orange in preparation for breeding season, but in winter they fade to duller shades of their summer color. Juveniles are less colorful than adults. They are also the biggest puffins at about 16 inches tall.

Romp Cachets – Design A



First Day of Issue
Tufted Puffins



FIRST DAY OF ISSUE



S & T Cachets

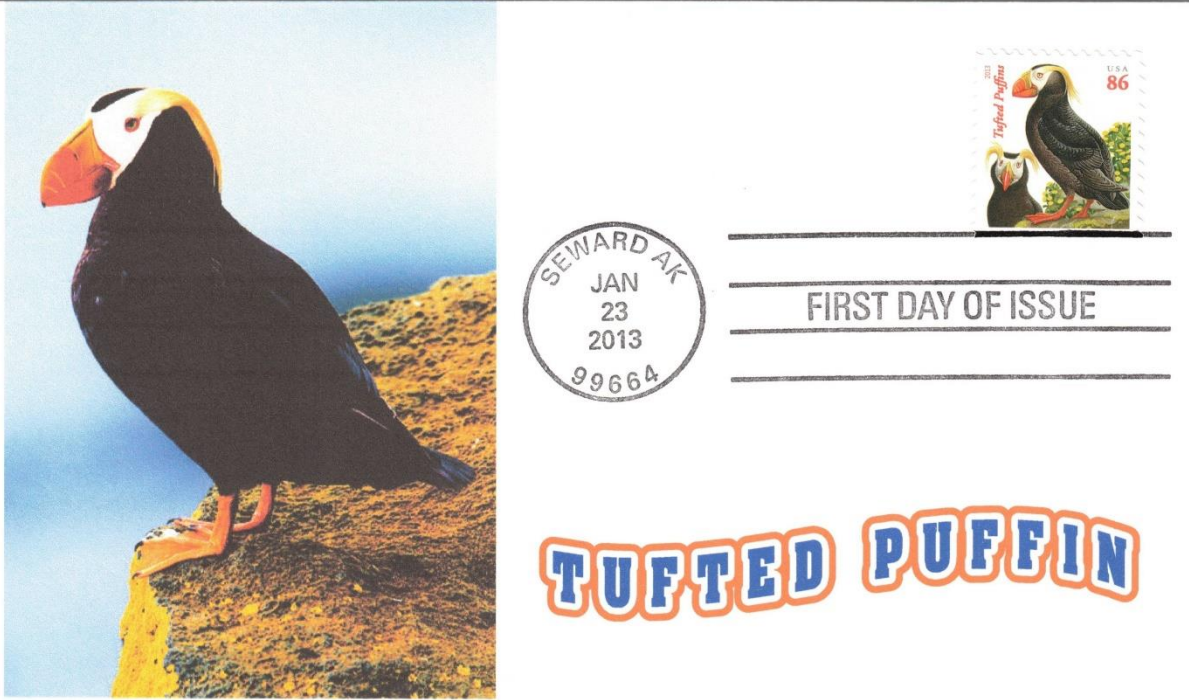


FIRST DAY OF ISSUE

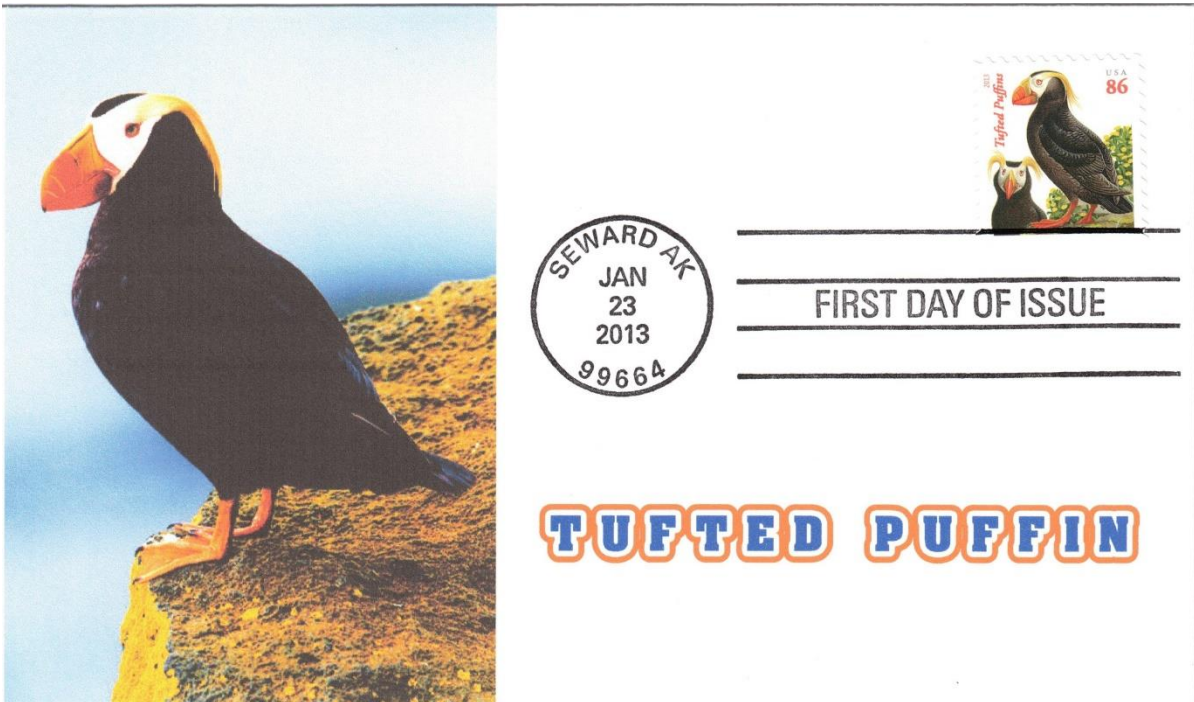


Tufted Puffins
Adult & Juvenile

Sand Key Cachets (Jim Plunkett)-Design A



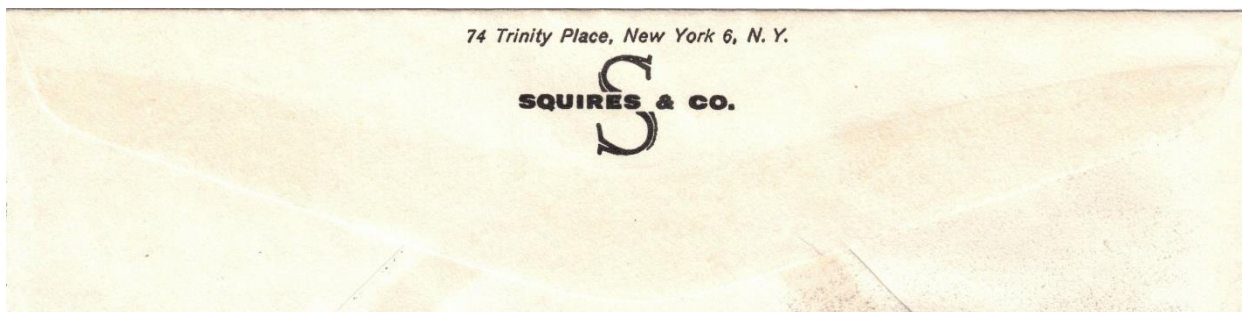
Sand Key Cachets (Jim Plunkett)-Design B



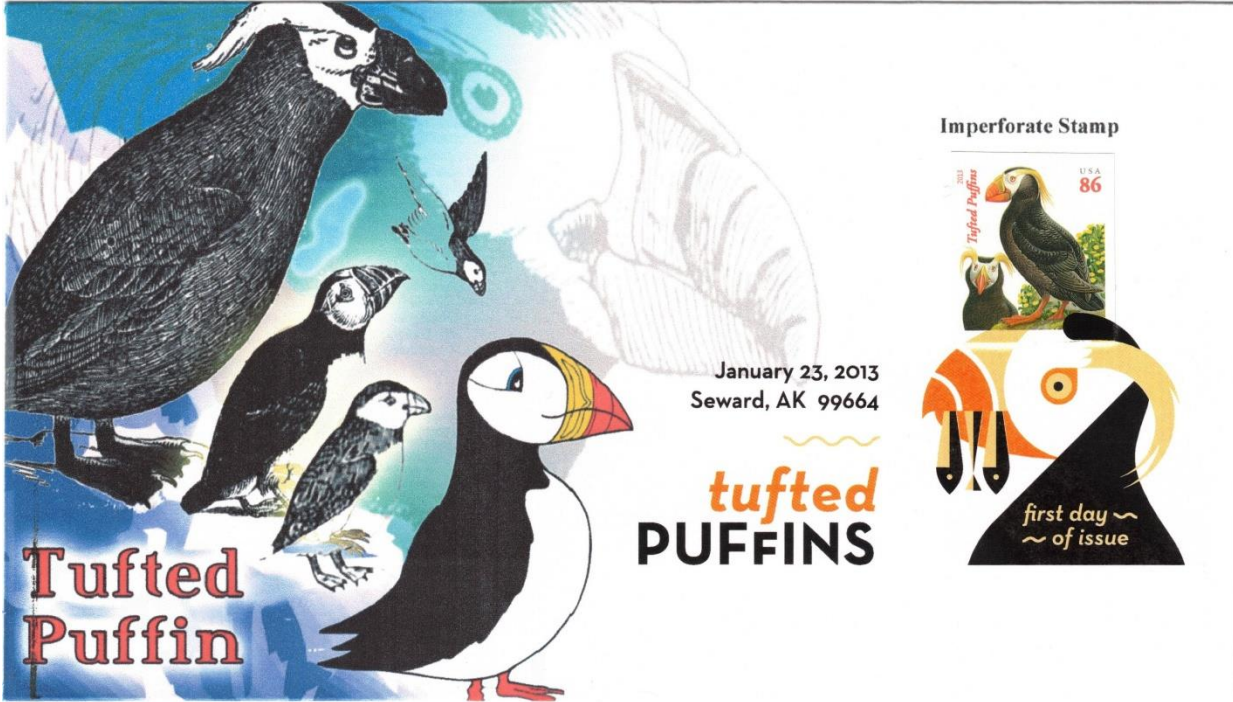
Squires and Co. (reused C53 FDC)[Artcraft Variety]



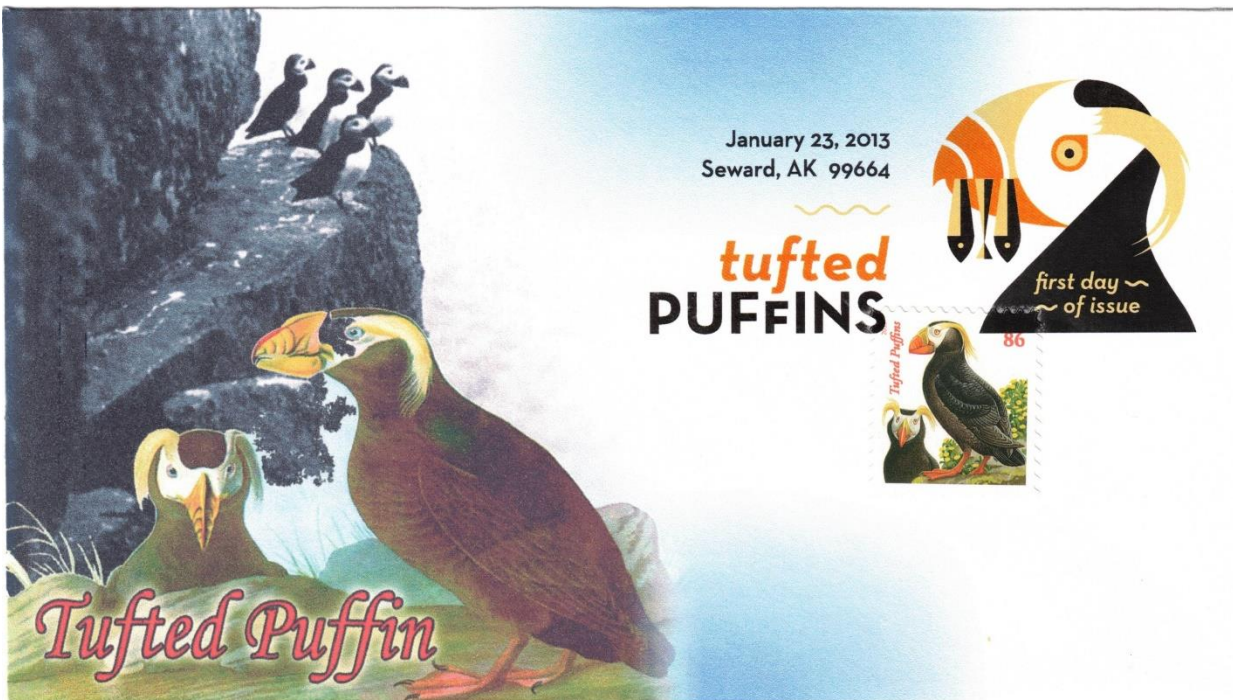
reverse



Therome Cachets (Tom Peluso)-Design A-Imperf



Therome Cachets (Tom Peluso)-Design B



Toad Hall Covers, Cachet #1 (Dana Jacobson)

Tufted Puffins



January 23, 2013
Seward, AK 99664

tufted
PUFFINS



Toad Hall Covers, Cachet #2 (Dana Jacobson)

Tufted Puffins



January 23, 2013
Seward, AK 99664

tufted
PUFFINS



Unknown (AK map)



USPS



Vintry House (Steve Wilson)



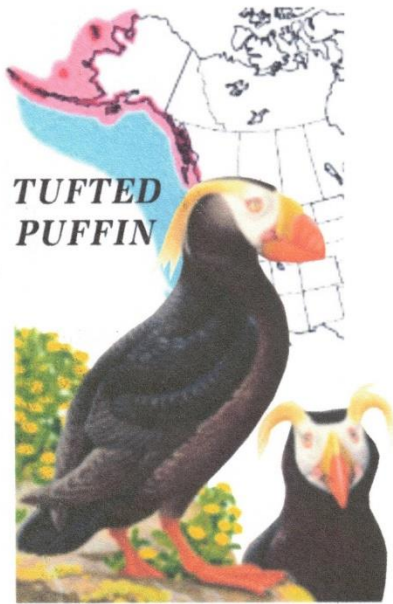
TUFTED PUFFINS

VINTRY HOUSE



FIRST DAY OF ISSUE

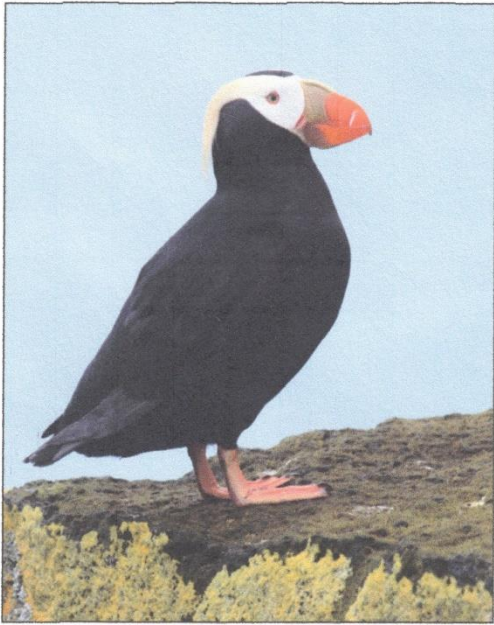
Wilson Covers



FIRST DAY OF ISSUE

WILSON 36/38

Webcraft



FIRST DAY OF ISSUE